



**GANESH  
MACHINERY**  
*The Edge in Cutting.*

20869 Plummer St. Chatsworth, CA 91311

Toll Free: 888-542-6374 (US only)

Phone: 818-349-9166 | Fax: 818-349-7286

[www.ganeshmachinery.com](http://www.ganeshmachinery.com)

# **GANESH GMV-4 CNC**

## **40-Taper CNC Milling Machine**



- **FAGOR 8055 MC Teach Control**
- **Full CNC Capability - No CNC Experience Required**
- **Full Manual Capability with Teach-In-Playback Capability**
- **12" x 54" Hardened & Ground Table**
- **Box Ways on Saddle & Column for High Cutting Rigidity**
- **Tilt Head Solutions Available for Angle Work**
- **5-HP Motor w/ 80-4,000 RPM Spindle Speeds (5,000 RPM Optional)**
- **Class-7 Precision Fafnir Spindle Bearings and Box Ways**
- **Precision Double-Nut Preloaded Ballscrews**
- **Spring Loaded Way Covers for Saddle and Column**
- **Knee Power Feed & Hard-Chrome Plated Quill**

**GANESH CNC PLUS MILLS ARE THE ULTIMATE TOOLROOM SOLUTION!**

## **STANDARD MACHINE FEATURES:**

### **CONSTRUCTION –**

- Meehanite Castings, fine grain and high density cast iron using the superior Meehanite Process yields superior vibration dampening and improved surface finish and tool life
- Built-in leveling ledge to level machine low to ground for high stability
- Precision preloaded zero-backlash ball screws in the X & Y axis
- Power quill feed with 3-feeds and adjustable feed stop & automatic feed trip release
- Multiple knee and table locks for higher rigidity

### **SPINDLE –**

- 5-HP Spindle Motor with 40-taper spindle for superior metal removal capability
- Dual Range Variable Speed Spindle - 80 - 520 rpm (low-range) / 600 - 4000 rpm (high-range)
- Fafnir Class-7 *Super Precision* spindle bearings (Made in England)
- Spindle Runout 0.0002" maximum – guaranteed!
- Forward/ Reverse switch mounted in a water tight switch box
- Hardened, ground and polished precision Back Gear
- 5,000 RPM Spindle available w/ an optional AC Inverter Spindle Head
- Two fans on spindle motor to provide extra head cooling for a long service life

### **QUILL –**

- Power quill feed with 3-feeds and adjustable feed stop & automatic feed trip release
- Hardened and Ground Quill – **Hard chrome plated** for a long service life
- Quill return spring (Made in USA)

### **BEDWAYS –**

- Turcite-B *Red Furon* Coated way surfaces in all Axis (Made in USA)
- Hardened and Ground Dovetail slideway for longitudinal table axis
- Hardened and Ground Heavy-Duty Square Box Sideways for Column And Knee
- Hardened and Ground Table with 3 T-slots ground to 5/8" for common workholding

### **FEATURES –**

- Hi-Torque 1.5-HP knee power feed is included to enhance operator efficiency
- Spring Loaded way covers for saddle & knee included for added safety and protection
- Automatic Metered Lubrication for all slideways and ballscrews
- Table T-slots ground to 5/8" to fit standard workholding nuts
- Built in coolant pump included
- Coolant & Chip-Tray is included
- Water resistant halogen lamp is included
- Inspection Report on accuracy, Instruction Manual, Tools and Tool Box
- Large compliment of parts and accessories in stock to ensure continued operation
- Conversational CNC Control with help menus for ease of use

### **INCREASE EFFICIENCY AND PRODUCTIVITY WITH TOOLROOM MACHINES FROM GANESH!**

**CNC Knee Mills provide the flexibility of easy setups and quick changeover that can't be achieved with bed mills or VMC's.**

**The Ganesh GMV-4 CNC is manufactured in our  
Certified ISO 9002 Production Facility in TAIWAN.**

## **STANDARD GANESH GMV-4 CNC SPECIFICATIONS:**

### **TABLE –**

<b>Table Size:</b>	12" X 54" (254mm X 1372mm)
<b>Table Travel / (With CNC Control)</b>	33.5" (850mm)
<b>Table Capacity</b>	1200 lbs
<b>T-slot width (3 Ground T-Slots)</b>	5/8" with ground reference edges (15.9mm wide)

### **MACHINE TRAVELS & CAPACITY –**

Travel may be reduced by limit switches, CNC etc.

<b>Table Travel – X axis / (With Power Feed)</b>	36" (914mm) / 32" (812mm)
<b>Cross Travel – Y axis</b>	16" (400mm)
<b>Knee Travel –</b>	16" (406mm)
<b>Ram Travel</b>	17.7" (450mm)
<b>Spindle Nose-to-Table Distance</b>	2" – 18" (50 - 457mm)
<b>Ballscrew ground pitch (X &amp; Y)</b>	200" per rev. (5mm)
<b>Adjustable scale ring resolution</b>	0.001" (0.0254mm)

### **SLIDE WAYS**

Hardened & Ground Meehanite Cast Iron

<b>Longitudinal Table – Z Axis</b>	Hardened & ground dovetail ways
<b>Cross Slide to Knee – Y Axis</b>	Hardened & ground square box ways
<b>Knee to Column</b>	Hardened & ground square box ways

### **SPINDLE HEAD –**

<b>Head tilt (Left-to-Right)</b>	90 – 0 – 90 degrees
<b>Head tilt (Front-to-Back / Up-Down)</b>	45 – 0 – 45 degrees
<b>Head Swivel</b>	360-degrees
<b>Spindle Motor</b>	5-HP, 3-Phase 208–240 vac,
<b>Spindle Taper</b>	40-taper
<b>Spindle Runout</b>	0.0002" maximum runout (0.005mm)
<b>Spindle Bearings</b>	Fafnir ABEC-7 matched set of Class-7 bearings
<b>Variable Speed Drive - Dual Range</b>	80 - 520 rpm (low-range) / 600 - 4000 rpm (high-range)

**Note:** *5,000-RPM Electronic Variable-Speed Spindle available with the optional AC Inverter Spindle Head*

### **QUILL –**

<b>Quill Travel – CNC Z-Axis</b>	5" (127mm) Manual & Power Feed w/o 3 <sup>rd</sup> CNC axis
<b>Quill feeds (per rev.) – With Trip Release</b>	0.0015", 0.003", 0.006" (0.038mm, 0.076mm, 0.152mm)
<b>Quill Diameter</b>	4.13" (105mm)

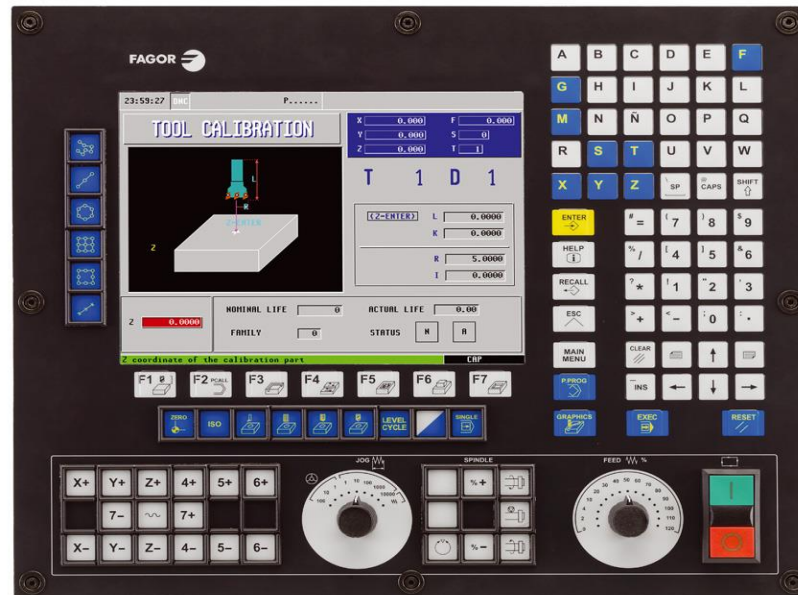
### **DIMENSIONS & WEIGHT –**

<b>Power Requirements</b>	3-Phase 208-220vac $\pm$ 5% @ 22-amps (440 vac optional)
<b>Coolant Capacity</b>	11-Gallons (41 liters)
<b>Machine weight</b>	3528 lbs

# FAGOR 8055MC CNC CONTROLLER – 4<sup>th</sup> AXIS CAPABLE

The Fagor 8055 MC Control System is perhaps the most versatile CNC in existence due to its Dual Operating System. In one mode, it is a very powerful ISO G-code control System and, in the other mode, it features **Icon conversational programming with highly interactive graphics**, which make even complex tasks easy to program - **regardless of the operators experience level**.

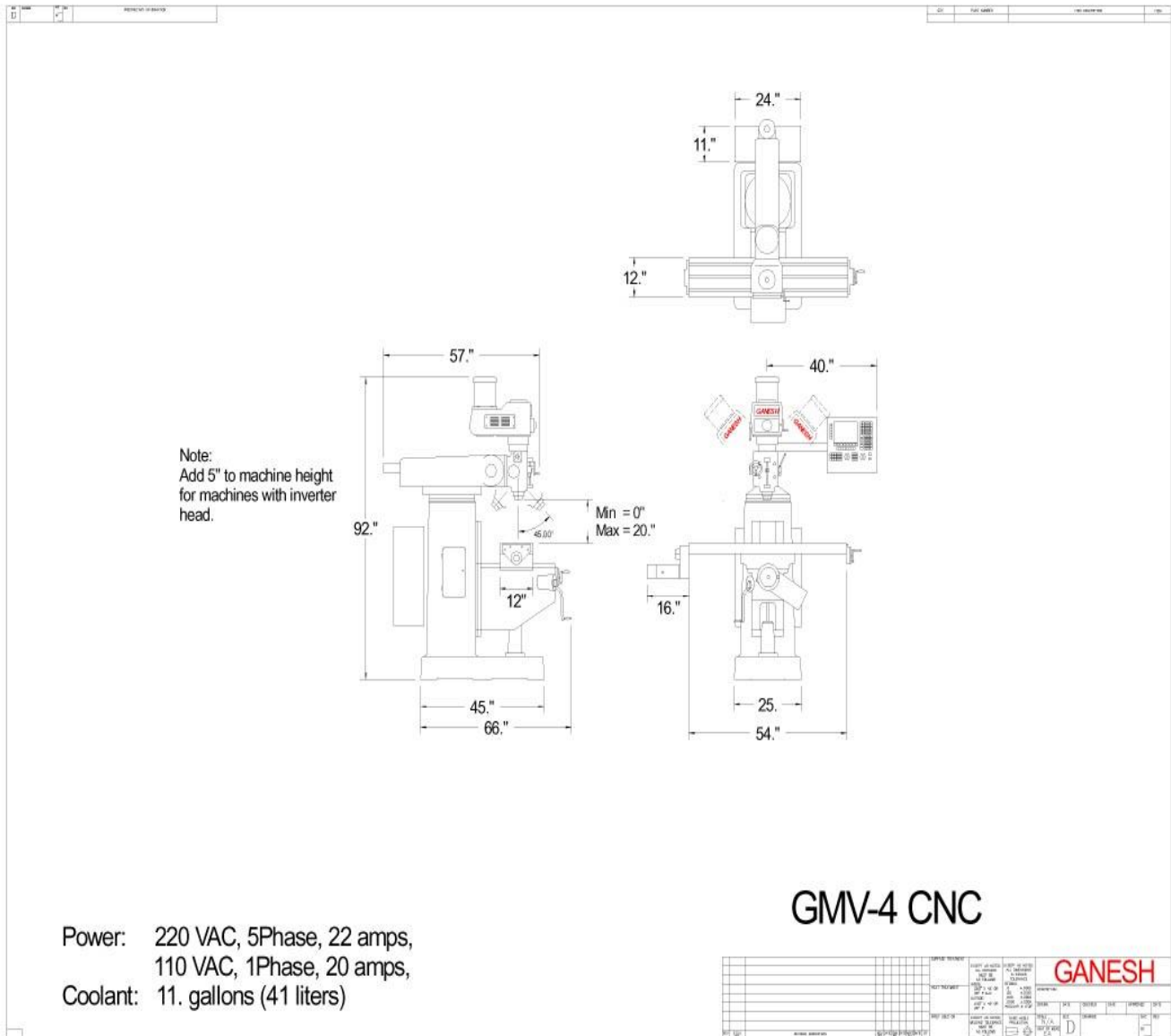
No prior CNC programming knowledge is required to operate this control.



## **Fagor CNC 8055 MC Control System**

- **Icon Conversational Programming – 26 High-Performance Canned Cycles**  
Rectangular Boss cycle, Round Boss cycle, Rectangular Pocket cycle, Circular Pocket cycles, Profile Pocket 2D & 3D cycles, Slot Milling, Profile Milling, Multiple Drilling cycles, Boring cycles, Reaming cycles, Arc bolt hole cycles, Random position cycles, Grid Pattern position cycles.
- 4-axis CNC + spindle all under full CNC control
- 4-axis simultaneous interpolation with full Linear, Circular and **Helical Interpolation**
- Fagor Intelligent Profile Editor (mini **CAD/CAM**)
- Tool Radius, Tool Length, Tool Wear compensation, 255-sets
- Simulation mode, dry run mode, and Solid 3D Graphics Display with zoom feature
- 10.4" High Resolution LCD color monitor
- Jog Mode & MDI Mode
- Tool offset and Work Coordinate Zero offset tables
- G-code Programming and Editing (on-line with interactive editor), plus M-codes
- WIN DNC offline software program
- Ballscrew pitch & backlash compensation
- Tele-diagnosis: Remote Instant Service capability through modem. (optional)
- Front-mounted USB port for program transfer (standard), Ethernet TCP/IP (optional)

# FLOOR PLAN LAYOUT



**Prices and specifications subject to change without prior notice.**